

Discharge Reactor

Power Quality Solutions



Discharge Reactor

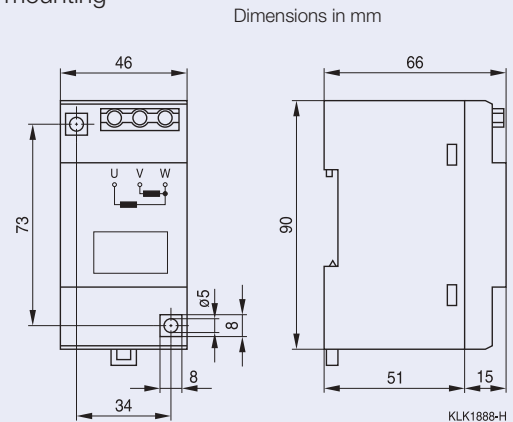
SABA KHAZEN

General

The losses of discharge reactors are substantially lower than those of discharging resistors. They satisfy the requirement for permanently connected discharging device and for a discharge time of a few seconds. Fast discharging allows a fast re-switching in automatic PFC equipment. However, max. 5000 switching operations (according to IEC 60831) should not be exceeded.

Features and dimensional drawings

- Fast discharge for fast reconnection of capacitors
- Reduced losses
- Shockproof case for DIN rail mounting



Technical data

Ordering code		B44066E9900L001
Voltage	V_R	230 ... 690 V
Frequency	f	50 / 60 Hz
Internal configuration		2 windings in V arrangement
Resistance	R	7.5 k Ω
Discharge time	t	230 V up to 25 kvar < 10 s / up to 50 kvar < 20 s / up to 100 kvar < 40 s 400 ... 525 V up to 25 kvar < 5 s / up to 50 kvar < 10 s / up to 100 kvar < 20 s 525 ... 690 V up to 25 kvar < 3 s / up to 50 kvar < 6 s / up to 100 kvar < 12 s
Power loss	P_{LOSS}	< 1.6 W
Free-wheeling current	I	< 3.4 mA
Accepted discharge number		1 x / minute and 100 kvar
Insulation class	R_{INS}	Ta = +40 °C/B
Cable diameter	\varnothing	0.75 ... 2 x 2.5 mm ²
Terminals		fixing torque 0.5 Nm
Installation location		indoor
Ambient temperature		-25 ... +55 °C
Cooling		natural
Dimensions	h x w x d	90 x 46 x 66 mm
Weight		0.5 kg

